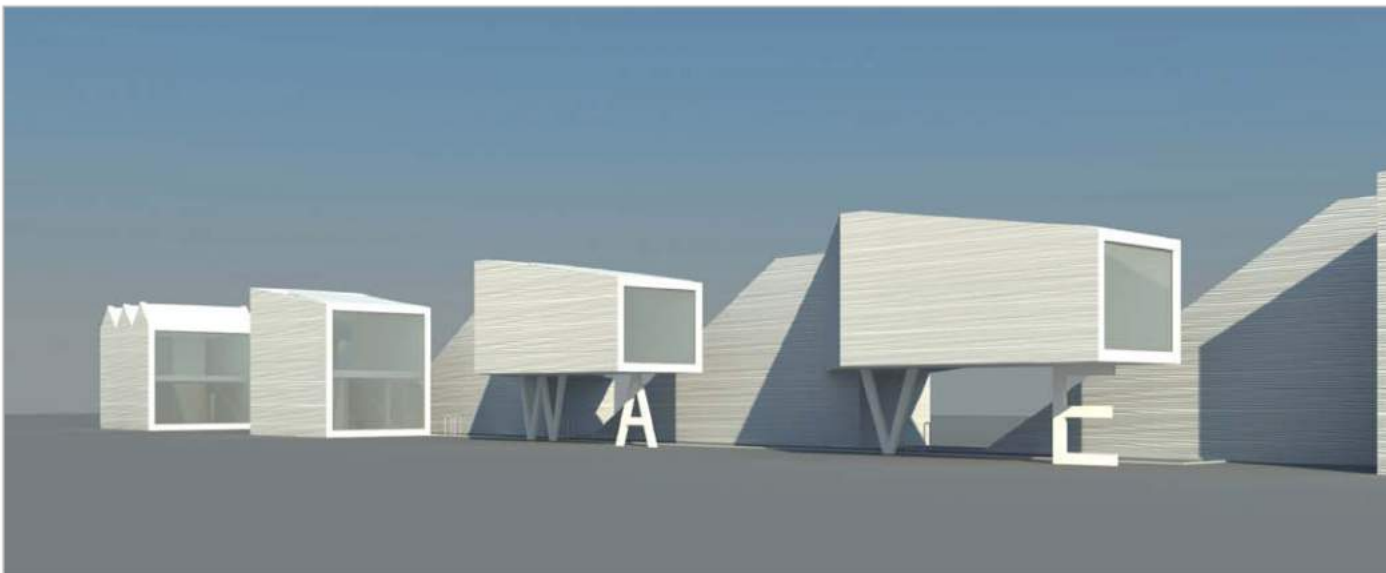




WAVE Residences





close to culture

Town: 7100 Neusiedl am See / Austria

45 km to Vienna (A)
 40 km to Bratislava (SK)
 190 km to Budapest (H)

Neusiedl am See, Burgenland, is the regional district municipality, altitude 131m, population 4.684, area 57,16 km² summer tourism and lake bathing resort, situated in the northern end of lake Neusiedl at the edge of the "Parndorfer Platte" tableland.

close to nature

Region: Neusiedler See / Burgenland

285 km² lake surface
 300 days sunshine per year
 10.000 ha wine cultivation

Lake Neusiedl lies in the east most province of Austria. This region around the steppe lake with over 2.000 hours of sunshine annually, is one of the most popular holiday areas in Austria. Sport, culture, nature, wine or fine food - the UNESCO World Heritage area of Lake Neusiedl has all the right ingredients for a perfect holiday.





W A V E



Big **WAVE** Logo on the hill side.

close to home

Facts & Figures: W A V E Residences

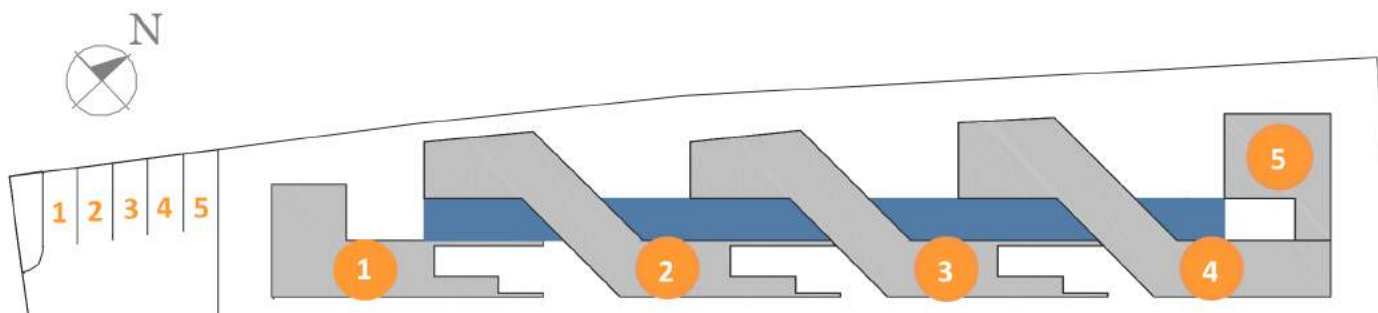


The WAVE residence are featuring a stunning architectural concept. Five luxurious housing units are arranged around a common swimming pool, creating a unique architectural experience.

The built volumes arise out of the surface, rolling over the expanse of water - like a Wave out of the sea - phasing out in spectacular roof terraces.

An outstanding spatial setting and interaction of outdoor space, buildings and pool area.

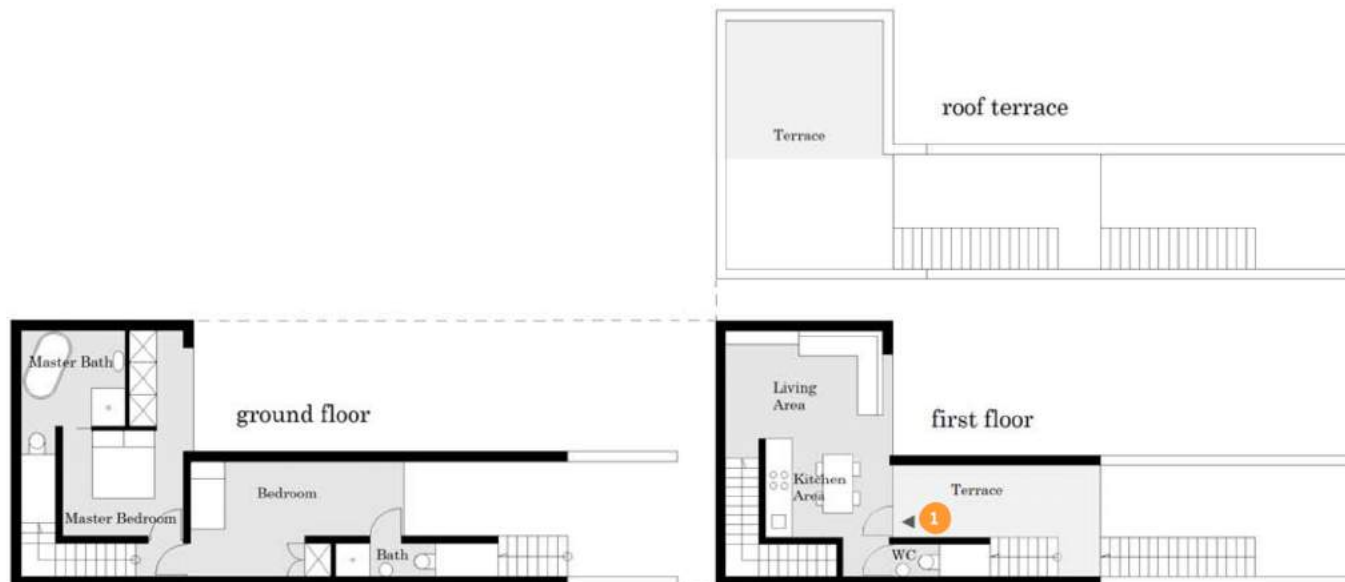
UNIT #	LIVING SPACE	TERRACE SPACE	DESCRIPTION	ROOF TERRACE	POOL ACCESS	PARKING
1	85 m ²	51 m ²	fully equipped kitchen-cum-living room, 2 bedroom, 2 en-suite bath (master with bath tub + shower), separate toilette	✓	✓	✓
2	92 m ²	51 m ²	fully equipped kitchen-cum-living room, 2 bedroom, 2 en-suite bath (master with bath tub + shower), separate toilette	✓	✓	✓
3	92 m ²	51 m ²	fully equipped kitchen-cum-living room, 2 bedroom, 2 en-suite bath (master with bath tub + shower), separate toilette	✓	✓	✓
4	104 m ²	61,5 m ²	fully equipped kitchen-cum-living room, 2 bedroom, 2 en-suite bath (master with bath tub + shower), separate toilette	✓	✓	✓
5	89 m ²	15 m ²	fully equipped kitchen-cum-living room, 2 bedroom, 2 en-suite bath (master with bath tub + shower), separate toilette	n/a	✓	✓



floor plans

Unit # 1

KITCHEN-LIVING-ROOM	30 m ²
MASTER BEDROOM	16 m ²
EN SUITE MASTER BATH	9 m ²
BEDROOM	18,5 m ²
EN SUITE SHOWER BATH	3 m ²
WC	1,5 m ²
TERRACE	15 m ²
ROOF TERRACE	36 m ²
PARKING LOT	14 m ²



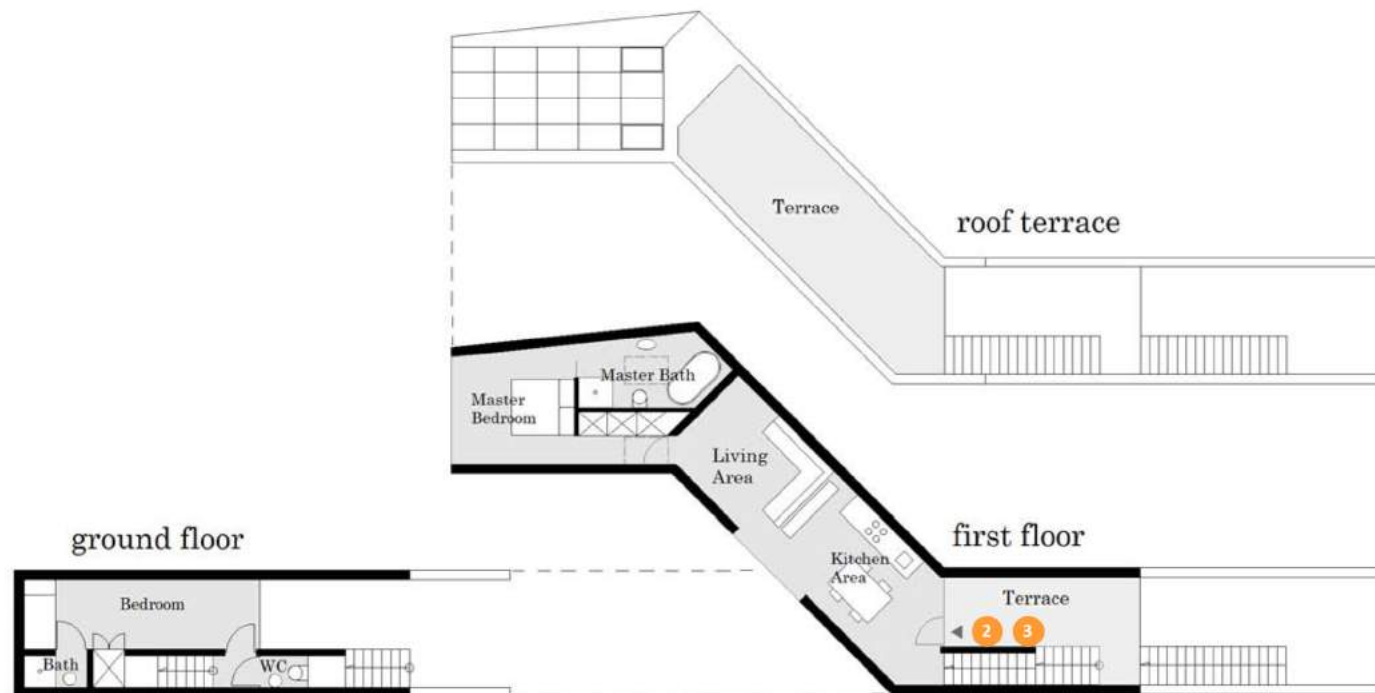


WAVE Residencies. Units 1 & 2

floor plans

Unit # 2 / 3

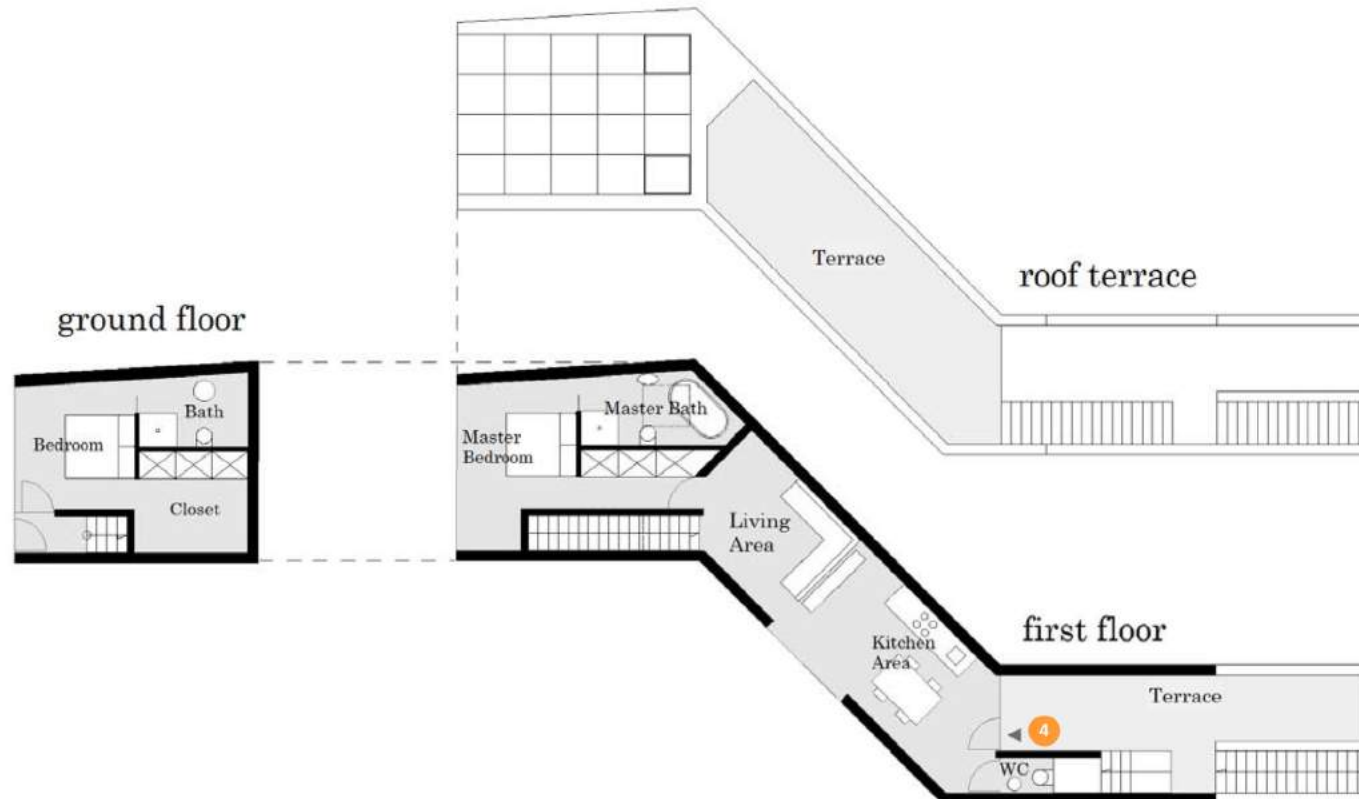
KITCHEN-LIVING-ROOM	37 m ²
MASTER BEDROOM	19,5 m ²
EN SUITE MASTER BATH	8 m ²
BEDROOM	18 m ²
EN SUITE SHOWER BATH	2,5 m ²
WC	1,5 m ²
TERRACE	15 m ²
ROOF TERRACE	36 m ²
PARKING LOT	14 m ²



floor plans

Unit # 4

KITCHEN-LIVING-ROOM	39 m ²
MASTER BEDROOM	21 m ²
EN SUITE MASTER BATH	8,5 m ²
BEDROOM	22 m ²
EN SUITE BATH	6,5 m ²
WC	1,5 m ²
TERRACE	23,5 m ²
ROOF TERRACE	38 m ²
PARKING LOT	14 m ²





WAVE Residencies. Units 3 & 4

floor plans

Unit # 5

KITCHEN-LIVING-ROOM	32 m ²
MASTER BEDROOM (w. bathtub)	24 m ²
EN SUITE MASTER BATH	5,5 m ²
BEDROOM	16 m ²
EN SUITE BATH	2,5 m ²
WC	1,5 m ²
TERRACE	15 m ²
PARKING LOT	14 m ²



ground floor



first floor



general

Information

TOTAL PLOT SURFACE AREA	1.490 m ²
TOTAL LIVING SURFACE AREA	465 m ²
POOL SURFACE (swimming area)	165 m ²
TERRACE AREA	275 m ²
PARKING LOTS	2 x 5 = 10 PARKING (5 automatic parklifts)
PHOTOVOLTAIC SOLAR MODULES	115 m ²
HEATING SYSTEM	5 Independent brine-to-water heat pumps (geothermal energy) controlled ventilation & under floor heating

